

# 2024



**WINTER**

**INSIDER'S GUIDE**



# CONTENTS

WELCOME	3
TRAVELLING TO FALLS CREEK	4
INFO ON THE GO	5
DRIVING TIPS	6
WHEN YOU ARRIVE	7
ACCOMMODATION TRANSFER	8
GETTING AROUND	9
VILLAGE GUIDE	10
EQUIPMENT HIRE & RETAIL SHOPS	11
LIFT PASSES	12
ADULT LESSONS	13
KIDS LESSONS	14
DOWNHILL SKI & SNOWBOARD TRAILS	15
FAMILY FUN	16
EVENTS	17
CROSS-COUNTRY SKIING	19
THRILLS AND CHILLS	20
DINING GUIDE	23
VILLAGE DIRECTORY	29



# #FALLSFREEDOM

## WELCOME TO FALLS CREEK, AUSTRALIA'S PREMIER ALL SEASON ALPINE RESORT.

We are so happy to have you here, whether you've been here 100's of times or it's your first, welcome! We are excited to share our mountain with you.

If it's your first time to Falls Creek, this guide will answer a lot of your questions about parking, getting around the village and how to make the most of your Falls Creek adventure. To those who have visited before, we welcome you back and can't wait to share what's happening in 2024.

Check out the following pages for all the information you need about how to get here, what to do, how to get decked out in the latest snow gear, and all the activities on our lively mountain.

Our cosy alpine village, pristine landscape and spectacular ski slopes are ready for you to explore. Be our guest and take a look through the tips and info in this guide – you never know what helpful hint you might find.



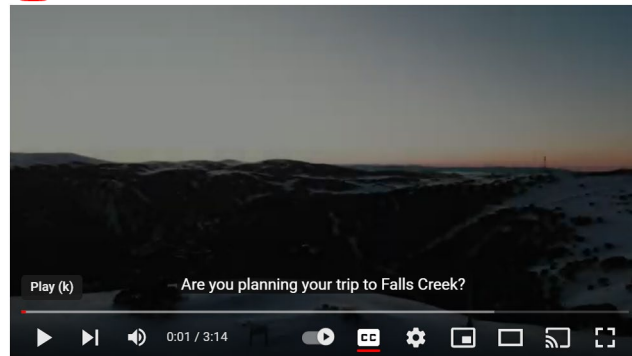
# WELCOME TO FALLS CREEK



# TRAVELLING TO FALLS CREEK

## GETTING HERE

Travelling to Falls Creek can require a little know-how when you first come to visit. We've put together a video so you are in the know from the get-go.



**HOW TO VISIT FALLS CREEK IN WINTER.** Everything you need to know.

## SNOW CHAINS

During the declared winter snow season, all vehicles driving to Victorian alpine resorts are required by law to carry and be able to properly fit snow chains (including 4WDs). You can rent these at several outlets in Myrtleford, Bright and Mt Beauty along the way. Thanks to the great work of our snow clearing crew, chain fitting usually applies only during, or directly after heavy snowfall.

**Check our Snow Report before you go and make sure you fit chains only when and where advised by LED signage or resort staff.**

If you do need to fit chains there are designated bays to do this. Please ensure you are safely off the road before exiting the vehicle. If you are unsure whether you need to fit chains check the live status in the snow report at [fallscreek.com.au](https://fallscreek.com.au) or the Falls Creek phone app. You can also call Visitor Information on (03) 5758 1200.



## INFO ON THE GO

### GET ORGANISED AND GET ONLINE BEFORE YOUR TRIP

Make your trip to the mountain smoother by pre-purchasing your resort entry vehicle permits prior to arriving. Save time at the gate and get on the slopes faster.

### PURCHASE YOUR RESORT ENTRY PERMITS ONLINE

Before your trip, jump online at [fallscreek.com.au](https://fallscreek.com.au) to purchase your Resort Entry Permits, then print the permits and display on the dashboard.

This will make it quicker for you to get through the gate and onto the slopes.

Visit [fallscreek.com.au/resort-entry](https://fallscreek.com.au/resort-entry)

### PURCHASE YOUR LIFT TICKETS ONLINE

Buy lift tickets early and save up to 35% when you buy online at least 7 days ahead.

Visit [skifalls.com.au](https://skifalls.com.au) to purchase.

### LET'S GET SOCIAL

We post the freshest of pics and videos of our snow conditions daily on our social media. Don't forget to post your own updates using [#fallscreek](https://twitter.com/falls_creek), [#fallsfreedom](https://twitter.com/falls_freedom).



Falls Creek Resort



@FallsCreek

### ACCOMMODATION

Looking for accommodation? No worries. At [fallscreek.com.au](https://fallscreek.com.au) you can compare a huge range of properties both on and off the mountain and check out the latest deals. Visit [fallscreek.com.au](https://fallscreek.com.au) to view accommodation options or call the team of reservations experts who can help you with inspiration and information on [1800 033 079](tel:1800033079)

### SMARTPHONE APP

Want the latest updates at your fingertips? Download the Falls Creek app on your phone to help access live cams, snow conditions, trail status' and more. Track your runs for bragging rights later and switch on push notifications to be amongst the first to know any updates on the mountain.

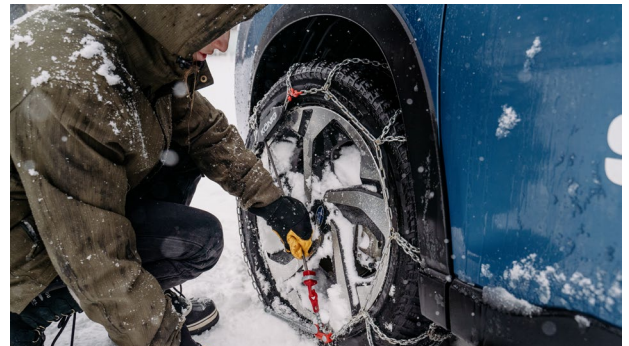




## DRIVING TIPS FOR FALLS CREEK

### TIPS FOR DRIVING AT FALLS CREEK

- **LP gas vehicles:** Switch to petrol for best performance in alpine areas.
- **Diesel vehicles:** Alpine diesel fuel mix should be used in all diesel vehicles (available in Myrtleford, Bright and Mt Beauty).
- **Fuel:** Fill up in Mt Beauty as there is no fuel available at Falls Creek.
- **Snow chains:** Pack your chains at the ready for easy access in-case conditions change on your drive. Always fit chains only when advised as fitting chains on a dry road can damage the road and your vehicle. If you rent snow chains, record the chain fitting demonstration to refer to later.
- **Driving:** In icy conditions, avoid sudden braking or hard acceleration.
- **Visibility:** Drive with your headlights on in foggy conditions and avoid using high beams.
- **Snow on vehicle:** Do not drive with accumulated snow on your vehicle. Doing so is illegal, dangerous and creates hazards to other vehicles.
- **Icy windows:** Use a stiff plastic scraper to clear ice from car windows (never pour hot water on an icy windscreen).
- **Snow clearing:** You may need a shovel to dig your car out of the snow. Make sure you take this to your accommodation & don't leave it in the car!
- **Park and ride:** If you're not comfortable driving in the snow, the park and ride facility is a great stress free option. Available in Mt Beauty through Falls Creek Coaches: [falls creekcoaches.com.au](https://falls creekcoaches.com.au)
- **Parking:** If staying for a few days it is a good idea to fit chains when you park in case of heavy snowfall. This will make it easier to dig out and move your car afterwards.





## WHEN YOU ARRIVE

### RESORT ENTRY

During the snow season all vehicles entering the resort require a valid Resort Entry Vehicle Permit for the duration of your stay. This includes the days of arrival and departure. All Resort Entry Permits expire at midnight on the last day of the permit.

The Resort Entry fee is a charge per vehicle and it doesn't matter how many passengers you have, or whether you are staying at Falls Creek or off the mountain. If you arrive after 5pm, entry is free, but for the remainder of your stay, you are required to purchase a permit.

Please visit [fallscreek.com.au/resort-entry](https://fallscreek.com.au/resort-entry) to purchase your permit.

### PARKING FOR DAY TRIPS

You can self-park in the Gully, Slalom North or Windy Corner Day Car Parks, these are located on the village map at the back of this guide.

### PARKING FOR OVERNIGHT STAYS

The Accommodation Transfer Service (ATS) provides a ticketed transport system to your lodge when the village is snowbound. ATS will also provide transport for your departure date back to the ATS terminal.

Stop at the Accommodation Transfer Terminal on the main road. Once you have unloaded, the ATS crew will direct you to an overnight parking area and provide a free shuttle to return you to the terminal.

If the village roads are clear, you can drive to your accommodation to unload with a 30min access time limit.

If you arrive after-10pm (or midnight on Fridays), park in the Late Arrivals parking area just downhill from the ATS. You will need to move your vehicle to the correct parking area by 10am the following day and obtain the necessary Resort Entry Permit.

Be sure to obey all parking signage and ensure your vehicle is parked completely within the lines of an approved parking space.

### ELECTRIC VEHICLES

There are 4 Ocular IQ EV charging outlets located in the Gully Carpark, compatible for any EV within Australia. You will need to use the Chargefox App to use these.

**Our village is proud of its amazing ski-in, ski-out environment. When there is sufficient snow in the village it is closed to vehicles and during these times the Accommodation Transfer Service (ATS) provides a unique, memorable service to transport you and your luggage to and from your accommodation.**

Tickets for the Accommodation Transfer Service are available online at [www.falls creek.com.au](http://www.falls creek.com.au) or at the resort when you arrive.

### USING ATS ON ARRIVAL

- Park as directed in front of the ATS Terminal and unload your luggage.
- Enter the ATS Terminal building via the entry area and purchase or validate your ticket at the ticket window (ensure you have a valid Resort Entry Permit prior to arriving at the resort).

TRIP	ADULT	CHILD (5-16)	FAMILY PASS (2 ADULTS, 2 CHILDREN 5-16y.o)
Single	\$30	\$21	-
Return	\$47	\$30	\$130
Season pass \$230, Taxi service \$110 (\$200 return)			Excess Baggage \$10*

\* Children under 5 free. No luggage allowance with Child under 5. Extra luggage costs may apply.

- An attendant will help you to a car park and return via free shuttle bus.
- Proceed to the staging area and await direction for boarding the next available oversnow vehicle.

### BOOKING RETURN TRIP

- Confirm your planned return time with the ATS when you arrive. You can change this time if needed by calling (03) 5758 1203 at least 24 hours in advance.
- At your pre arranged departure time, wait outside your accommodation for the oversnow shuttle back to the ATS and vehicle transfers.

**TICKETS AVAILABLE ON ARRIVAL**

# ACCOMMODATION TRANSFER



# GETTING AROUND

## VILLAGE SHUTTLE

A free oversnow shuttle service circulates along designated routes through the village between 8am and 5:30pm daily on a 20-minute cycle, depending on demand. This service will extend to 9pm on Night Skiing evenings. Due to space restrictions no luggage is allowed except skis, snowboards and personal shopping. Please queue at the nominated shuttle stop locations and be aware that passenger preference may be given to families with young children and the mobility impaired.

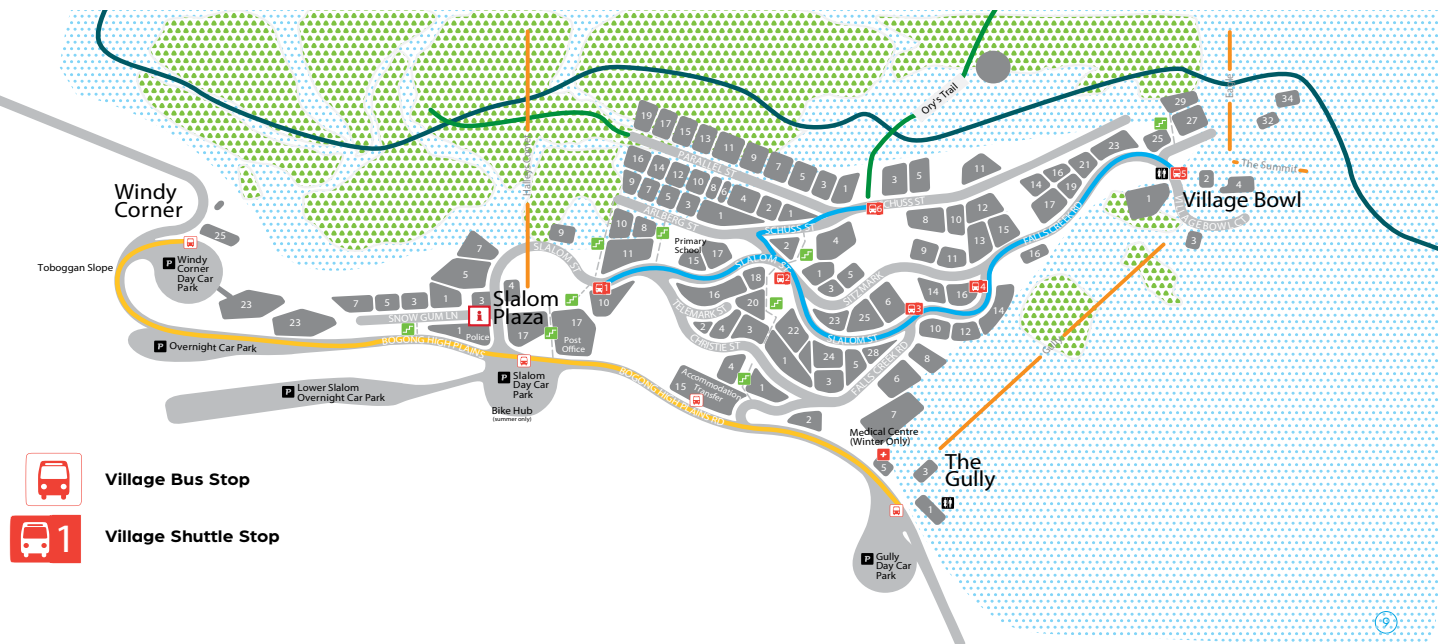
## VILLAGE BUS

This free shuttle bus service travels along the Bogong High Plains Road between Windy Corner, Slalom Plaza ATS and the Gully on a 15 minute cycle between 8am and 5:30pm daily. No luggage is allowed except for skis, snowboards and personal shopping. Use this bus to access the Windy Corner Toboggan Slope, Cross Country Ski Trails and Gully Chairlift to the Village Bowl.

## VILLAGE WALKWAYS

Everything at Falls Creek Village is within walking distance but a little local knowledge can help you get around faster. Familiarise yourself with our fast-track stairs and fixed walkways for some handy shortcuts through the village.

For the quickest path through the centre of the village, the well-lit stairs behind the ATS Terminal offer direct access from the bottom to the top of the village.



# VILLAGE GUIDE

## VISITOR INFORMATION CENTRE

The Visitor Information Centre is staffed every day of the snow season from 8am to 5pm. It's the best place to go for any questions or assistance you might need during your visit. With experienced, local staff, we are here to help with advice on activities and dining options.

[Visit at 1 Slalom Street or call \(03\) 5758 1200.](#)

## SUPERMARKET, ATM & POST OFFICE

Foodworks Supermarket is open 7 days from 8am till 7pm and is located at the base of the stairs to Slalom Plaza. Foodworks stocks a complete range of fresh food, groceries and liquor. The supermarket also features an ATM, phone card recharges and newsagency products. Australia Post is located directly in front in a stand-alone shopfront.

[For more information phone Foodworks Supermarket on \(03\) 5758 3009.](#)

## PHARMACY

The nearest pharmacy is located in Mt Beauty. You can arrange for prescription medication to be delivered to Falls Creek Village. You will need a valid prescription and current Medicare card for this service.

[For more information phone Mt Beauty Pharmacy on \(03\) 5754 4224 during business hours.](#)

## MEDICAL CENTRE

The Falls Creek Medical Centre is located near the base of the Gully Chairlift, on the main road as you enter the village. Experienced doctors are on site 7 days during winter to treat in-patients referred by Ski Patrol. An ambulance is available on-mountain (to avoid a nasty bill, we strongly recommend taking out ambulance/travel Insurance before your trip as accidents do happen!).

[No walk-ins will be accepted. To make an appointment phone \(03\) 5758 3238 during business hours. Calls made after hours will be answered.](#)

[In an emergency call 000 immediately before calling the Medical Centre.](#)



## I AM FEELING UNWELL, WHAT SHOULD I DO?

If you have serious symptoms, such as difficulty breathing, call 000 and ask for an ambulance and tell them if you also have a fever or a cough, sore throat or respiratory illness.

If you begin to feel unwell, and have a fever or a cough, sore throat, shortness of breath or respiratory illness you should self-isolate immediately and do a Rapid Antigen Test (RAT). Please bring RAT's with you on your visit to the resort as these may be hard to come by once here. Do not go to the medical centre if you have any coronavirus symptoms. Call your doctor and advise of your symptoms and risk factors for personalised advice.

## INTERNET ACCESS

A free public wifi hotspot is available in the St Falls Day Shelter (halfway up the stairs from Foodworks Supermarket). The shelter is open 24 hours with instructions and terms of use on display.

# EQUIPMENT HIRE & RETAIL SHOPS



## ON-MOUNTAIN RENTAL & RETAIL

There is a huge range of options to rent or buy ski, snowboard, cross country and snowplay equipment in the village. You can also find a great range of clothing, homewares, gifts and accessories for purchase.



## LIFT PASSES

### LIFT TICKETS – BUY EARLY AND SAVE

All guests wishing to ski or snowboard require a valid lift ticket and corresponding Mountain Access Card. For the best prices, purchase your lift ticket and Mountain Access Card online and in advance.

Your lift ticket access is loaded onto your Mountain Access Card – a reusable credit-card sized smart card that automatically lets you through scanning gates at resort lifts. This system is quick and easy, and you don't even need to take your card out of your pocket.

Visit [skifalls.com.au](https://skifalls.com.au) to top up your card at any time with lift tickets, lessons and more.

#### For smooth lift access, follow these tips:

- Check names printed on the Mountain Access Cards to ensure each family member has the correct card
- Place the card in a pocket on the left-hand side of your body, above your waist.
- Make sure to place the card away from mobile phones and credit cards, and only have one Mountain Access Card in your pocket – having multiple cards may interfere with the scan
- As you approach the gate it will attempt to scan the card and either open the gate for a valid scan or remain closed for an invalid scan.
- If an invalid scan is registered and the gate does not open, a staff member will be able to provide assistance.

Visit [skifalls.com.au](https://skifalls.com.au) to purchase lift tickets and lessons online and in advance to enjoy all that Falls Creek has to offer in winter.

For further enquiries on lift tickets email [tickets@fallscreek.net](mailto:tickets@fallscreek.net).

FOR INFORMATION ON LIFTS & LESSONS VISIT [SKIFALLS.COM.AU](https://skifalls.com.au)



## ADULT LESSONS

### ADULT LESSONS

Progress your skills on the slopes and book a lesson with the best this season! You'll be amazed at the difference a lesson can make. Catering to skiers and snowboarders over 15 years old, Falls Creek Snowsports School offers adult lessons to suit all abilities. Whether it's your first day on the slopes or you're looking to take your park skills to the next level, Falls Creek Snowsports School has the right lesson for you.

### GROUP LESSONS

Falls Creek Snowsports School provide adult group lessons that are perfect for all abilities to help progress your skiing and snowboarding abilities. When it comes to skiing and snowboarding, the Snowsports School instructors are your personal trainers, here to elevate you to the next level.

- First class advice in a safe and supportive environment
- Learn with people of your same ability
- Skip lift lines with our priority loading
- Explore the mountain in ways you've never seen before!

### PRIVATE LESSONS

Fast track your improvement with a customised experience! Falls Creek Snowsports School provide Private Lessons for all abilities, whether you're new to the slopes or a seasoned pro. Benefit from one-on-one instruction, or with friends and family, and a lesson customised to your specific needs.

**Buy your lessons early and save – with limited availability, book now at [skifalls.com.au](https://skifalls.com.au) so you don't miss out!**

FOR INFORMATION ON LIFTS & LESSONS VISIT [SKIFALLS.COM.AU](https://skifalls.com.au)

## EARLY CHILDHOOD CENTRE

Falls Creek Early Childhood Centre is a fully accredited facility and the perfect solution to have those family members not quite ready to ski or board looked after by qualified educators. The centre caters to ages 12 weeks to 5 years. Full day sessions only. Find availability online and book ahead to avoid missing out. For bookings and availability please email [earlylearners.falls creek@alpineresorts.vic.gov.au](mailto:earlylearners.falls creek@alpineresorts.vic.gov.au)

[falls creek.com.au/childcare](https://falls creek.com.au/childcare)

## SNOWCLUB (3-6 YEARS)

Full Day Snowclub lesson programs are back in 2024, with half day lessons also available! Snowclub provides the perfect environment to nurture your child's love of the snow while learning the basics of skiing. Aimed at introducing young ones to their early skiing experience, Snowclub will help build their confidence in a fun and safe environment.

## JUNIOR WORKSHOP (7-14 YEARS)

Full Day Junior Workshop lesson programs are back in 2024! Develop your child's confidence on the snow while improving their abilities with our Junior Workshop lessons. Whether it's their first time on the snow or they're ready to take their skiing and snowboarding skills to the next level, our Junior Workshops will provide the perfect environment for them to learn while having fun.

**Buy your kids lessons early and save – with limited availability, book now at [skifalls.com.au](https://skifalls.com.au) so you don't miss out!**



# KIDS LESSONS

FOR INFORMATION ON LIFTS & LESSONS VISIT [SKIFALLS.COM.AU](https://skifalls.com.au)

# Victoria's Largest Resort



Mt Feathertop 1922m

Mt McKay 1842m



# DOWNHILL SKI & SNOWBOARD TRAILS

### ALPINE RESPONSIBILITY CODE

There are inherent risks in all snow recreational activities. Common sense, staying in control and personal awareness can reduce these risks. Risks include rapid changes in weather, visibility and surface conditions, as well as natural and artificial hazards such as rocks, trees, stumps, vehicles, lift towers, snow fences and snowmaking equipment. Observe the code and ride with courtesy to others.

- Stay in control and avoid other people and hazards. Use appropriate protective equipment, especially helmets, to minimise the risk of injury.

### SKI PATROL Ph: 03 5758 3502 (8am-5.30pm). Emergency & after hours assistance call 000

- You must have the ability to use each lift safely. If in doubt ask the lift attendant.
- Obey all signs and warnings, and keep off closed trails and areas.
- It is your responsibility to avoid and give way to people below and beside you.
- Do not stop where you are not visible from above or where you obstruct a trail.
- Before starting downhill, or merging into a trail, look uphill and give way to others.

### KNOW THE CODE. IT'S YOUR RESPONSIBILITY.

- Use care to prevent runaway snowboards.
  - If you are involved in or see an accident, alert and identify yourself to Resort Staff.
  - Be aware that it is dangerous to ski, board or ride lifts if your ability is impaired by drugs or alcohol.
- Failure to observe the code may result in cancellation of your ticket or pass by Resort Staff. Do not ski, skate or board on ice over lake or basalt hill quarry.

### LEGEND

- Beginners
- Intermediate
- ◆ Advanced
- Ski Lifts
- Quad Chairlift
- Triple Chairlift
- Poma Lift
- Carpet Lift
- Home/Link Lift
- Medical Centre
- Snowsports School
- Day Shelter
- Gear Rental
- Ski Patrol
- Bus Terminal
- Public Toilets
- Terrain Park
- Snowcam
- Car Parking
- Shops & Services
- SES
- Toboggan Slope
- Information
- CFA
- Police
- Tickets
- Pete's Train Carpet
- Snowsports School Carpet

**Download the free Falls Creek App**  
 Stay up to date on lift activity and events while in resort. Track your day on the hill with GPS tracking, find your way around with an interactive trail map and access our live snowcams.

@FallsAustralia | /FallsAustralia | @FallsAustralia



## FAMILY FUN

**The best part of a trip to the mountains is the fun you have in the snow! We've brought together some of the best snowplay activities around and put them in the one place for the whole family to have a great day.**

We are known as the family mountain for good reason, we love to welcome little guests to Falls Creek and entertain with all our heart. There is so much for the family to do, from progression perfect terrain so the whole family can enjoy ski time together, tobogganing and snow play for the kids (and adults!)

[fallscreek.com.au/kids-families](https://fallscreek.com.au/kids-families)

### TOBOGGANING

Tobogganing can be enjoyed on the dedicated toboggan slope located at Windy Corner. Toboggans are available to hire from the Windy Corner Cafe, Halley's Ski Hire, Yogi's and Central Snowsports in the village. You can also bring your own as long as it complies with regulations.

The slope features a magic carpet to assist you in getting back up the slope safely and easily. Use of the Magic Carpet is \$15 per session needs to be booked and paid online in advance at [fallscreek.com.au/tobogganing](https://fallscreek.com.au/tobogganing).

[fallscreek.com.au/tobogganing](https://fallscreek.com.au/tobogganing)

### FALLS CREEK MUSEUM

Experience our diverse history at the Falls Creek Museum, located in the Panabode Building alongside Halley's Comet chairlift in Slalom Plaza. Entry is free but a gold coin donation is greatly appreciated in assisting volunteers to build and maintain the collection. The Museum is open when you see the yellow flags out, or by private appointment

[fallscreekmuseum.com.au](https://fallscreekmuseum.com.au) | (03) 5758 1202

### EVENTS

Falls Creek is host to a number of events across the season, from family-friendly fireworks to ski and snowboard events. Check out the website for the most up-to-date event listings.

[fallscreek.com.au/events](https://fallscreek.com.au/events)





## WEEKLY EVENTS

**Every week during our peak season, Falls Creek comes to the party with regular activities and events to make your visit one to remember. From fireworks to fire pits, there is something to keep you entertained most nights of the week.**

### TUESDAYS – TWILIGHT TUESDAYS

Head to the Village Bowl from 3:30pm to 5:00pm every Tuesday for loads of fun and games for kids. There is music, fire pits and marshmallows to roast, plus Pete the Snow Dragon loves to make an appearance!

### WEDNESDAY & SATURDAY – NIGHT SKIING

Once the sun goes down, the Halley's Comet chair keeps spinning for night skiing and snowboarding on Wombats Ramble. Night skiing is open from 6pm-9pm (weather permitting) with the last upload at 8:45pm. It costs just **\$24** for adults or **\$15** for kids 5-17 years and is included for all Epic Australia Pass holders. Did we mention it's free for kids 4 years and under! Night skiing will run every Wednesday and Saturday from June 29 – August 31

[Visit \*\*skifalls.com.au\*\*](https://www.fallscream.com.au) to purchase your night skiing lift ticket.

### THURSDAY – FIREWORKS FIESTA

The Village Bowl comes alive every Thursday night from July 4 to August 29 with incredible fireworks! Set at the base of the Summit, you can watch on as colour bursts above the mountains. Visit the Bowl at 7pm for the start of the show. For the best views, grab a drink at The Frying Pan Inn or Lakeside Restaurant.

[Visit \*\*fallscream.com.au/events\*\*](https://www.fallscream.com.au/events) for more information on events.

\*All events are subject to snow and weather conditions and are subject to change. Night Skiing requires valid Mountain Access Card.

**GET EVENT UPDATES IN REAL-TIME. DOWNLOAD THE PHONE APP**



# WINTER EVENTS

## HIGHLIGHTS FOR OUR 2024 EVENTS CALENDAR

### SATURDAY JUNE 1

Ice Plunge

### SATURDAY JUNE 8 – MONDAY JUNE 10

Opening Weekend Festival

### FRIDAY JULY 5

Board Lounge Throwdown

### FRIDAY JULY 12

Wombat's Rambler

### SATURDAY SEPTEMBER 7 – SUNDAY SEPTEMBER 8

Summit Masters & Retro Weekend

### SATURDAY AUGUST 24

Kangaroo Hoppet

### FRIDAY AUGUST 30 – SUNDAY SEPTEMBER 8

Gay Ski week

### SUNDAY OCTOBER 6

Pond Skim

For all the information about events at Falls Creek, be sure to check out our website [falls creek.com.au/what-on/events](https://falls creek.com.au/what-on/events)

\*all events are subject to snow and weather conditions

For more events, please click on the below link.

[WINTER EVENTS CALENDAR](#)

**LIVE GPS GROOMER  
TRACKING**[falls creek.com.au/snowreport/](https://falls creek.com.au/snowreport/)**CROSS COUNTRY  
SKIING**

**Falls Creek is renowned as Australia's home of Cross Country with some of the best terrain in Australia. The Resort and surrounding national park boasts over 60km of world-class trails that are groomed daily. Free to access and easy to learn, the sport is a great low cost introduction to the snow.**

**FALLS CREEK CROSS COUNTRY**

Cross Country Skiing is a huge part of the unique activity base that makes Falls Creek so special, and it includes more than you may think. Skating on fast corduroy trails, exploring new terrain off-piste in the National Park, making tele carves down the lift-accessed runs – it is all part of this winter classic snowsport.

**RENTING EQUIPMENT**

See pages 18–19 for outlets offering cross-country rental equipment in the Falls Creek village. Outlets in the Kiewa Valley on the way to Falls Creek also offer cross-country rentals.

**LESSONS, CLINICS & TOURS**

Even if it is your first time on snow we recommend instruction and training to get you started. Falls Creek XC is there to help you get your ski on from beginners through to experienced skaters.

Looking to rent equipment or book lessons? Contact the centre via email [falls creekxc@ymca.org.au](mailto:falls creekxc@ymca.org.au) or phone 03 5758 3408.



# THRILLS AND CHILLS

**Falls Creek is packed with unique experiences. Tick a few of these off your bucket list this snow holiday.**

## SNOWMOBILE TOUR

Explore the far corners of the resort on a drive-your-own-snowmobile tour. Experience the never-ending views from Frying Pan Spur and Mt McKay. For an unforgettable end to your day book in a twilight tour and see the incredible colours of an alpine sunset over snow.

To book, head to [fallscreeksnowmobiletours.com.au](https://fallscreeksnowmobiletours.com.au)

## FALLS CREEK GUIDES

Breathe in the fresh Victorian Alps air while you ski tour the hidden valleys that are just beyond the resort. Private and group tours are available to safely explore out of the resort and into the beyond with your guide.

[fallscreekguides.com.au](https://fallscreekguides.com.au)  
or phone 0412 250 873

## BACKCOUNTRY TOURS

Skip the lift line and leave the crowds behind with Australia's only snowmobile lifted Backcountry Tours. Grab some mates or the family and explore 450 hectares of terrain, from the shoots of Mt McKay to the open bowls of Rocky Knolls. Tours can be suited to all riding abilities, from novice to expert there's something for everyone.

To book call 0490 216 765

## DAY SPAS & WELLNESS

Take a load off after a big day on the slopes at the incredible [Astra Day Spa](#). With everything from massages and beauty rituals to relaxing spas and heated mineral pool, you find the perfect option for some "me-time".

## SNOWSHOEING

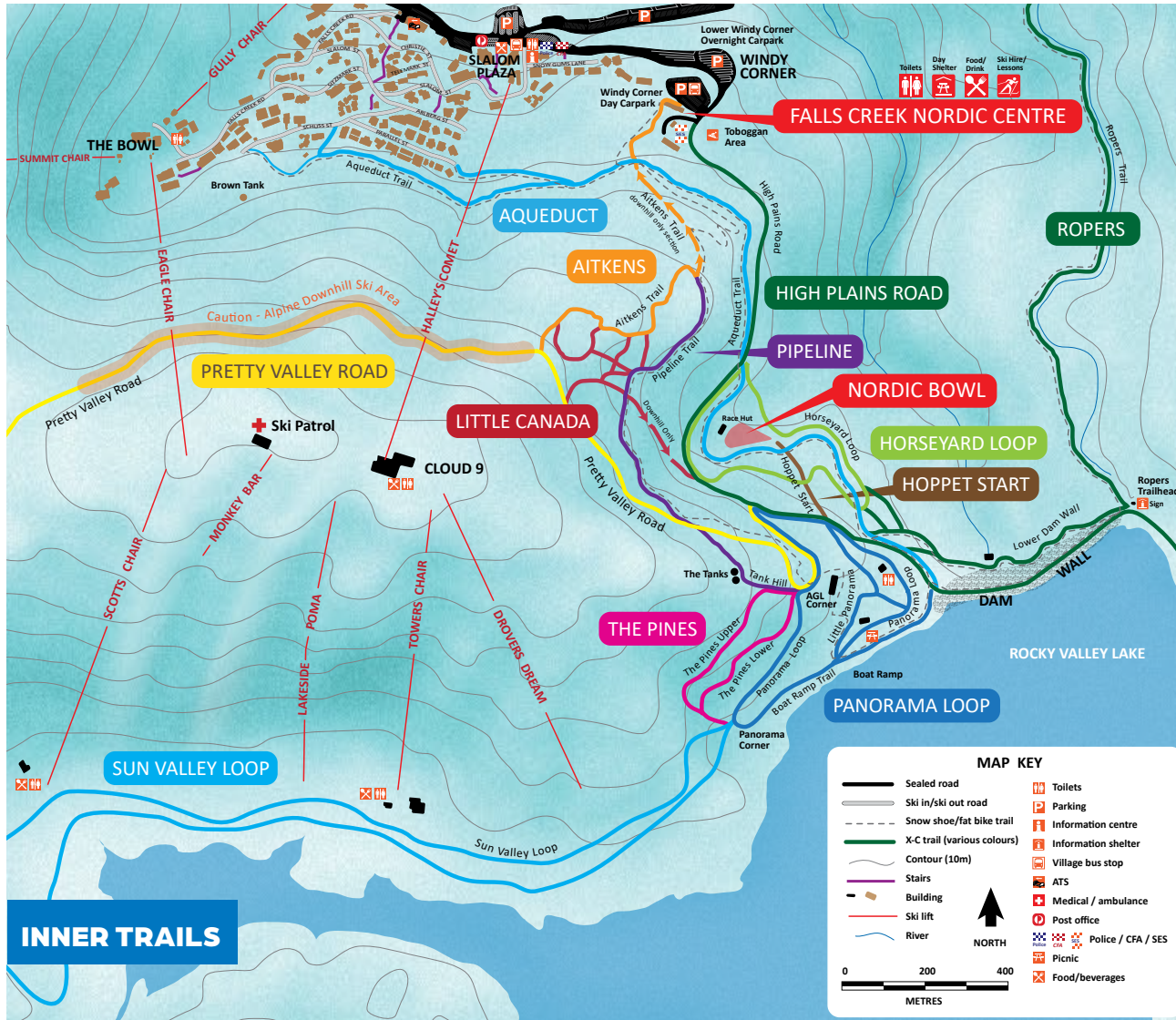
Nordic Snowshoeing is a unique way to experience the beauty of Falls Creek. On a back-country hike you can access spectacular views and locations rarely seen by most visitors to the resort. Snowshoes are easy to use and offer a unique way to enjoy the snow on a budget. They are also perfect for the whole family!

Snowshoe rentals are available at outlets in the Village Bowl and Falls Creek Cross Country at Windy Corner.

From here you can access the trailhead to a number of dedicated snowshoeing trails.

Pick up a trail map at Visitor Information or stop in to chat with the staff at Falls Creek Cross Country at Windy Corner.

CROSS COUNTRY SKI & SNOWSHOE TRAILS



# SNOWSHOEING & WALKING

Falls Creek and the surrounding High Plains is an incredible place to explore. With an extensive network of alpine trails used for hiking, trail running and mountain biking in summer, you can experience these in their winter setting by renting a pair of snowshoes.

### SNOWSHOEING

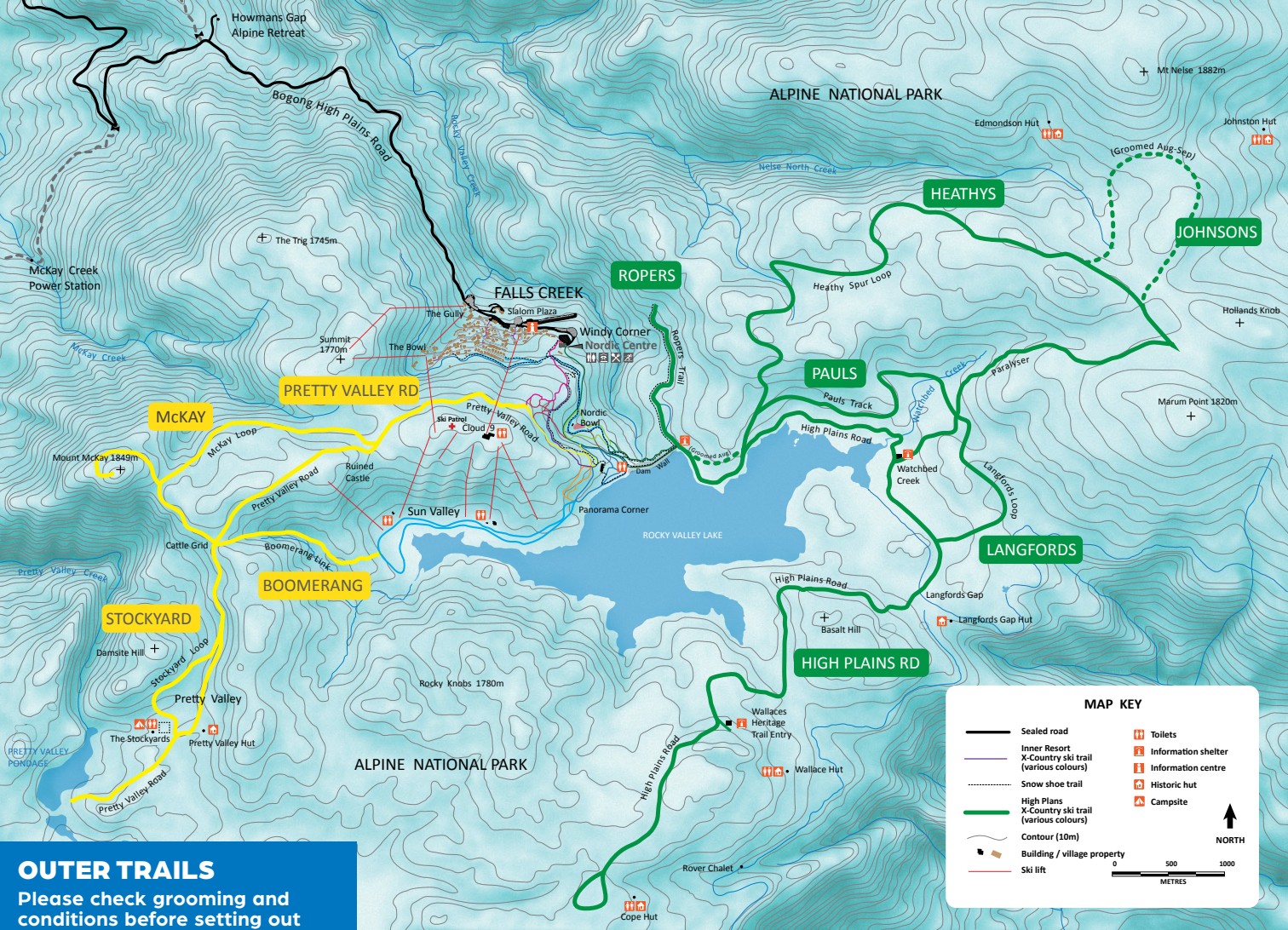
Nordic Snowshoeing is a unique way to experience the beauty of Falls Creek. On a back-country hike you can access spectacular views and locations rarely seen by most visitors to the resort. Snowshoes are easy to use and offer a unique way to enjoy the snow on a budget. They are also perfect for the whole family!

Snowshoe rentals are available at outlets in the Village Bowl and Falls Creek Cross Country at Windy Corner. From here you can access the trailhead to a number of dedicated snowshoeing trails.

Pick up a trail map at Visitor Information or stop in to chat with the staff at Falls Creek Cross Country at Windy Corner.

If you're heading out on foot or snowshoe, remember to obey signage and keep to the outer edges. This ensures trails can be enjoyed by walkers and cross country skiers.

[falls creek.com.au/plan-your-trip-winter/equipment-rental](https://falls creek.com.au/plan-your-trip-winter/equipment-rental)



**OUTER TRAILS**  
Please check grooming and conditions before setting out

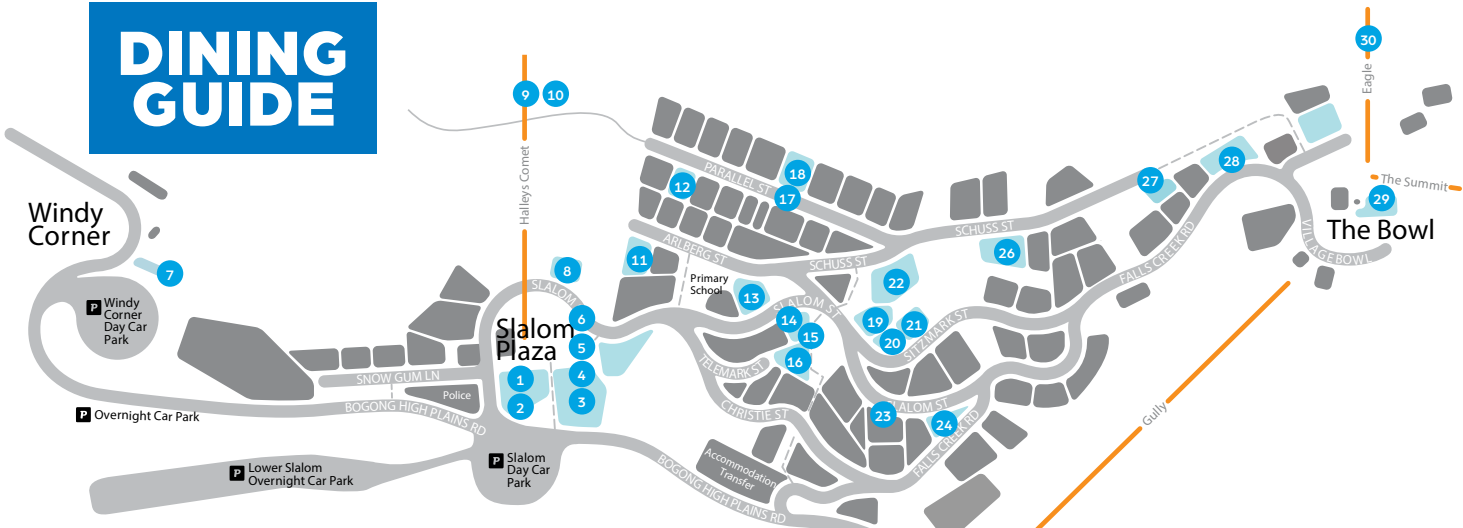
**MAP KEY**

	Sealed road		Toilets
	Inner Resort X-Country ski trail (various colours)		Information shelter
	Snow shoe trail		Information centre
	High Plains X-Country ski trail (various colours)		Historic hut
	Contour (10m)		Campsite
	Building / village property		
	Ski lift		

**NORTH**

0 500 1000  
 METRES

# DINING GUIDE



## CAFÉS & RESTAURANTS/DINING

- |                             |  |                                 |  |
|-----------------------------|--|---------------------------------|--|
| 1 1550 Café and Bar         |  | 12 Feathertop Restaurant        |  |
| 2 1550 Restaurant           |  | 13 Little Chop Italian Shop     |  |
| 3 Powder Keg                |  | 14 Sorella                      |  |
| 4 Slides                    |  | 15 Apartment 3                  |  |
| 5 Snonuts                   |  | 16 The Man Hotel                |  |
| 6 The Spud Shack            |  | 17 Jerry's Stall                |  |
| 7 Windy Corner Café         |  | 18 JB's Bar & Restaurant        |  |
| 8 The Last Hoot             |  | 19 SomePlace Else Bar and Grill |  |
| 9 Cloud 9                   |  | 20 Huski Kitchen                |  |
| 10 Blue Brumby              |  | 21 Astra Bar & Restaurant       |  |
| 11 Attunga Bar & Restaurant |  | 22 Ory's                        |  |
|                             |  | 23 Cooroona Restaurant & Bar    |  |

- |                            |  |
|----------------------------|--|
| 24 The Chophouse           |  |
| 25 Alpine Pepper           |  |
| 26 Summit Ridge Restaurant |  |
| 27 Lakeside Bar & Eatery   |  |
| 28 Falls Creek Hotel       |  |
| 29 Frying Pan Inn          |  |
| 30 Dicky Knees             |  |

Breakfast   Lunch   Dinner   Bar   Alcohol Takeaway

Coffee/Hot Chocolate   Drinks   Shakes   Snacks   Donuts



**1550 CAFE & 1550 RESTAURANT** B L D ☒

**Slalom Plaza, (03) 5732 8000**  
 1550 Café is your go-to spot for coffee, drinks, toasties and treats. At the bottom of the Halley's Comet Chair Lift, it's easily accessed and a great place to meet your mates for brekkie or lunch. Just next door you'll find 1550 restaurant, a classic modern Australian lunch and dinner spot.



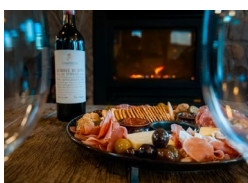
**APARTMENT 3** ☒

**18 Slalom St, (03) 5758 3211**  
 Apartment 3 - Elk's seductive cocktail bar hidden behind a luxe emerald curtain, is an après and late-night New York-style, 50 seat lounge and bar. Grab a signature or classic cocktail created by the house mixologist, sink into the divine velvet lounges and lap up the chilled atmosphere.



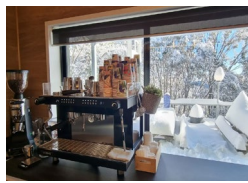
**ASTRA BAR & RESTAURANT** ☒ D ☒

**5 Sitzmark St, (03) 5758 3496**  
 Astra offers a homely yet sophisticated dining experience. From après cocktails and snacks around the open fire, to both an la carte and tasting menu dining offering, Astra is a must visit while at Falls Creek.



**ATTUNGA RESTAURANT** D ☒

**10 Arlberg St, (03) 5758 3255**  
 Offering some of the best restaurant views in Falls Creek, Attunga's comfortable lounge bar and restaurant opens daily with new Après menu and contemporary Australian Menu featuring local produce and wines.



**CEDARWOOD COFFEE WINDOW** ☒

**11 Schuss St, (03) 5758 3393**  
 A quick and convenient coffee stop on your way to the slopes underneath Cedarwood Apartments. Enjoy great coffee, served with a smile.



**CLOUD 9** ☒ ☒ ☒ ☒ ☒ ☒

**Top Halley's Comet Chairlift, (03) 5711 9109**  
 A world-class on-snow venue atop the Halley's Comet chairlift. Wood-fired pizza, fresh pasta, a carvery roasts, gourmet sandwiches, waffles, coffee and mezzanine bar for your après ski aperitif.



**COCK 'N' BULL** D ☒

**10 Slalom St, (03) 5758 3210**  
 The pub with traditional English fare and beers on tap has been a hit since its inception. Intimate wood-panelled booths, an authentic bar and friendly staff add to the atmosphere and style of something truly unique in Falls Creek



**DICKY KNEES** ☒ ☒ ☒ ☒

**Base of Scott's Chair**  
 Dicky Knees is located at the base of Scott's Chair Falls Creek. DK's is the perfect place to meet for lunch, a morning coffee or afternoon snack. Featuring a Bavarian style menu, pretzels, Kranskys and delicious coffee, DK's will get you back out on the slopes in no time. Walk in only.



**FALLS CREEK HOTEL** ☒ ☒ ☒

**23 Falls Creek Rd, (03) 5758 3282**  
 The Falls Creek Hotel is famous for their hearty lunch menu and live music at Harvey Hour on Tuesday's and Thursday's. Incredible views of the Village Bowl and Summit slopes from the balcony. The hotel is a Falls Creek village icon.



**FRYING PAN INN** ☒ ☒ ☒ ☒ ☒

**4 Village Bowl Ct, (03) 5711 9100**  
 Located in the historic heart of Falls Creek's famous Village Bowl, the Frying Pan Inn serves a delicious range of classic craft beers and superbly prepared barbeque style dishes in an elegant and rustic inspired pub atmosphere.





### HUSKI KITCHEN



3 Sitzmark St, (03) 5758 3863

A delicious range of South East Asian dishes daily, with a selection of cocktails, beers and a curated wine list. This year open for breakfast, lunch and dinner!

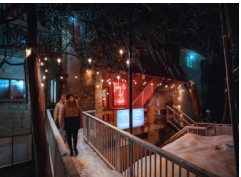


### JB'S RESTAURANT & PUBLIC BAR



9 Parallel St, (03) 5758 3278

JB's serves traditional german food. Think meats and cheese and the most amazing dessert spread you can imagine. Call to reserve your dinner booking.



### LAKESIDE BAR AND EATERY



14 Schuss St, 0455 500 849

Swing by Lakeside for the best sundowner views on the mountain, or book in dinner to watch the village bowl fireworks from the balcony. Enjoy cocktails by the fire, or a relaxed dinner with vegetarian options and a kids menu available.



### THE MAN HOTEL



14 Schuss St, 0455 500 849

Swing by Lakeside for the best sundowner views on the mountain, or book in dinner to watch the village bowl fireworks from the balcony. Enjoy cocktails by the fire, or a relaxed dinner with vegetarian options and a kids menu available.



### ORY'S BAR AND RESTAURANT



4 Schuss St, (03) 5758 3899

Open Breakfast, Lunch and Dinner with amazing food, coffee, wines and cocktails. Providing you with an excellent menu of modern Australian cuisine.



### POWDER KEG



Slalom Plaza

Situated right in the heart of the Slalom Plaza, Powder Keg is the perfect location for a tasty ski break. Known for quick and delicious meals, great beers on tap and a friendly atmosphere.



### SLIDES



Slalom Plaza

Serving up fabulous fast paced coffee and hot chocolate all day long... your one stop shop for delicious hot snacks and to get you on the snow faster with a smile. Specializing in the signature "Boozy Coffee" to spice up your ski... Slides are not your average coffee window!



### SNONUTS DONUTS



Slalom Plaza 0417 572 228

Hot Cinnamon Donuts, Jam Donuts (vegan), Milkshakes, Toasties (v), Baked Spuds (gf/v), Crepes (gf/v) sweet & savoury options, Nutella Desserts, Hot Chocolate & drinks. Gluten free, vegetarian, vegan and halal options available.



### SOMEPLACE ELSE



1 Sitzmark St, (03) 5758 3252

Modern burgers, cocktails, craft beers & an extensive wine list. Open 7 days a week for from 4.30pm till late.

Burgers speak louder than words.....



### SORELLA



18 Slalom St, (03) 5758 3211

Sorella Falls Creek is a high-class Restaurant and Cocktail Bar located at Elk. Sorella serves up modern Mediterranean and European fare in a plush, welcoming dining space featuring an open fireplace. They also have a selection of signature and classic cocktails, local wines and great beers on tap



### THE SPUD SHACK



**Slalom Plaza, 0417 572 228**

The Spud Shack offers simple, affordable, quick & hearty meals and snack options. Loaded fries, Spiral Spuds (Twistos), potato cakes, fish & chips, hash browns, baked spuds. Vegetarian, vegan, gluten free options available.



### SUMMIT RIDGE



**8 Schuss St (03) 5758 3800**

European inspired menu, warm ambience and friendly service in front of the open fire. 5 and 8 course degustation available for that special occasion with an extensive wine list. Open for dinner from 6pm. 6 nights (closed Tuesday).



### WINDY CORNER CAFE



**4 Village Bowl Ct, (03) 5711 9100**

Windy Corner provides lunch, snacks, drinks and treats when heading off or coming back from a cross-country session or a play in the toboggan park. It's your no-fuss, grab something quick cafe.

**B** Breakfast

**L** Lunch

**D** Dinner



Bar



Alcohol Takeaway



**epic**  
AUSTRALIA PASS™

# SKI & BOARD FALLS CREEK

FALLS CREEK  
HOTHAM  
PERISHER  
WHISTLER  
BLACKCOMB  
JAPAN  
BEST OF THE U.S.

EPICAUSTRALIAPASS.COM.AU



## We're with Falls Creek through the changing seasons.

We remain committed in our proud support for Falls Creek, year-round. As the snow falls and tourism returns to the region, we look forward to being back on the slopes with you. Then, when the seasons change, and the snow melts and flows down through the rivers, we'll transform the flowing mountain water into renewable energy.

 [agl.com.au](http://agl.com.au)

 Join the change

# BE RESPONSIBLE

**Regardless of how you enjoy your snow holiday, always show courtesy to others and be aware THERE ARE INHERENT RISKS in all snow recreational activities which common sense and personal awareness can reduce.**

These risks include rapid changes in the weather, visibility and surface conditions, as well as natural and artificial hazards such as rocks, trees, vehicles and snowmaking equipment.

## ALPINE RESPONSIBILITY CODE

**Know and observe the code below – it's your responsibility.**

1. Know your ability and always stay in control and be able to stop and avoid other people or objects. It is your responsibility to stay in control on the ground and in the air.
2. Take lessons from qualified professional instructors to learn and progress.
3. As you proceed downhill or overtake another person, you must avoid the people below and beside you.
4. Do not stop where you obstruct a trail or fun, or are not visible from above.
5. When entering a trail or run, or starting downhill, look uphill and give way to others.
6. When riding chairlifts always use the restraining devices. Always use suitable restraints to avoid runaway equipment. Ensure your equipment is in good condition.
7. Observe all signs and warnings. Keep off closed trails or runs and out of closed areas.
8. Before you use any lift, you must have the knowledge and ability to load, ride and unload safely.
9. Do not ski, snowboard, ride a lift or undertake any other alpine activity if your ability is impaired by drugs or alcohol.
10. If you are involved in, or witness and accident or collision, alert Ski Patrol, remain at the scene and identify yourself to the Ski Patrol, call (03) 5758 3502.

Failure to observe the code may result in CANCELLATION of your ticket by Ski Patrol or other authorised personnel.

## OUR ENVIRONMENT

At Falls Creek the mountains, clean air and pristine alpine views are our greatest asset. There are many ways you can help protect our beautiful environment during your stay.

### If you drop it, you drink it!

Falls Creek is situated at the top of the water catchment and water from our streams feed the Murray river and eventually travels all the way to South Australia. Please don't pollute our pristine waters by littering...bin it!

### Reduce your waste

Falls Creek has been collecting and recycling its food waste since 2011. Up to 40% of the resort's waste is foodwaste and when placed in landfill produces methane, a potent greenhouse gas. Look for the green 'Living Bin' in your accommodation and separate your food waste (fruit, vegetables, meat, eggs, tea bags...anything that was once living).

You can also reduce your waste by bringing your reusable coffee cup and reusable shopping bags with you to Falls Creek, just like you do at home.

### Protect Our Winters

The effects of climate change could dramatically impact the alpine region's unique biodiversity. Falls Creek proudly supports the Protect Our Winters campaign which aims to mobilize the outdoor sport community to take positive action on climate change. Some small actions you can take include;

- Reduce transport energy. Car pool to Falls Creek and walk around the village as much as you can.
- Turn off lights and appliances at the power point when not in use.
- Insulate your house or lodge. Turn down the thermostat and use draught stoppers.
- Invest in high star-rating, energy efficient appliances, and wash clothes in cold water.
- Purchase greenhouse friendly products and purchase local to reduce the carbon footprint of transporting products.
- Support renewable energy sources. Switch to Green Power with your electricity provider.

**When the snow melts Falls Creek cranks into a new gear with summer events and adventures taking the stage.**

## FALLS CREEK MOUNTAIN BIKE PARK

**Falls Creek Mountain Bike Park** is over 50kms of world class gravity trails, high in the rooftop of Victorian Alpine National Park. Designed and built by World Trail, Falls Creek's Park is a showcase of gravity and flow in beautiful alpine terrain.

Open between November and April the park is ideal for intermediates and beginners with challenges for the advanced as well. Greenline is an awesome trail from Summit to Lakeside with 5km of beginners descent. Stepping it up a few notches, Big Fella joins Flowtown and High Voltage as an epic bash for the more experienced. All trails start and finish within the resort and weekend bike shuttles make for endless rides without the uphill grind.

[falls-creek.com.au/summer-activities/mountain-biking](https://falls-creek.com.au/summer-activities/mountain-biking)

## ROAD CYCLING

The road to Falls Creek features challenging climbs, an awesome backdrop and finishes at a village as cycle-friendly as they come. Riding Falls Creek is a dream, it's no wonder one of the world's top ten best Sportives and Grand Fondos is held here with the Peaks Challenge event.

## GRAVEL RIDING

A cross between mountain biking and road cycling, gravel riding is a great way to adventure without the extreme of mountain biking. Falls Creek gives access to plenty of trail options for gravel riding, whether it be over the undulating along the high plains or riding up to look outs, we've got you sorted.

## TRAIL RUNNING & HIKING

At over 1600m, Falls Creek is arguably the nation's best altitude training location. There are 45km+ of National Park trails plus the 250ha Rocky Valley Lake is a feature you don't find just anywhere. A major highlight is the 37km Falls to Hotham Alpine Crossing – a 3 day, 2 night adventure trek between the two alpine resorts. With eco-friendly camping platforms and an alternate single day route this is a challenging yet achievable addition to any bucket list.

## EVENTS & VILLAGE LIFE

Summer life in the Falls Creek Village is a hive of activity with riders, runners, families and groups across most dates. Regular activities and a non-stop calendar of events throughout the warmer months, add to the charm and beauty of a high country summer holiday.

**OPEN 365 DAYS**

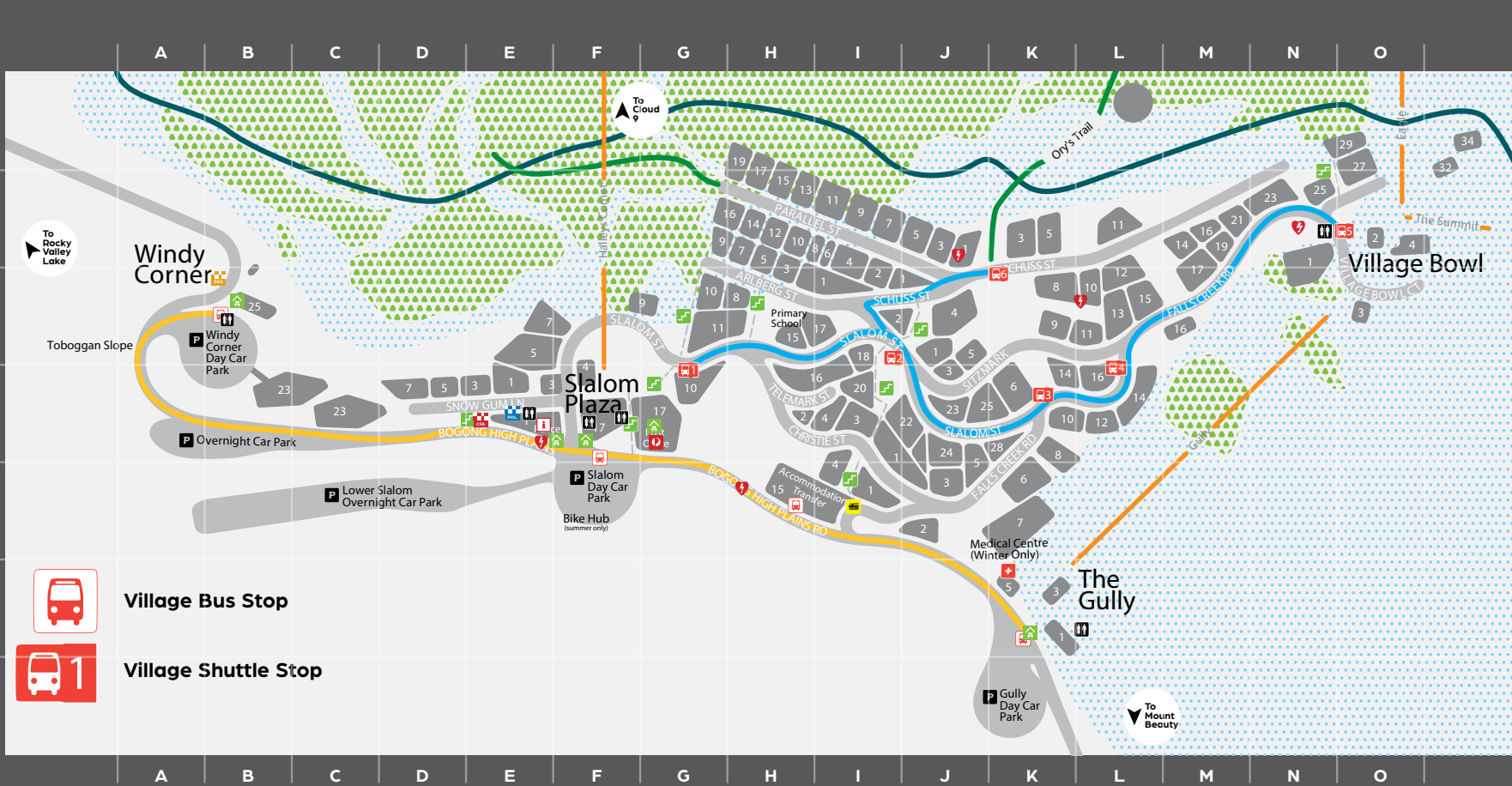
# VILLAGE DIRECTORY

BUSINESS/SERVICE NAME	ADDRESS	TELEPHONE	REF.
<b>BARS &amp; RESTAURANTS</b>			
1550 Café and Bar	Slalom Plaza	5732 8000	F4
1550 Restaurant	Slalom Plaza	5732 8000	F4
Apartment 3	18 Slalom St	5758 3211	I3
Astra Bar & Restaurant	5 Sitzmark St	5758 3496	J4
Attunga Bar & Restaurant	10 Arlberg St	5758 3255	G3
Sorella at Elk	18 Slalom St	5758 3211	I3
The Chophouse Winterhaven	28 Slalom St	5758 3888	J4
Cloud 9 Restaurant	Top Halleys Comet	5711 9109	
Cock 'N' Bull	Cnr Slalom/Christie St	5758 3225	H3
Cooroona Restaurant and Bar	24 Slalom St	5758 3255	G3
Country Club Restaurant	7 Bogong High Plains Rd	5758 3391	K5
Falls Creek Hotel	23 Falls Creek Rd	5758 3282	N2
Feathertop Restaurant	14 Parallel St	5758 3232	H2
Frying Pan Inn	4 Village Bowl Ct	5711 9100	O2
Huski Kitchen	3 Sitzmark St	5758 3863	J4
JB's Bar & Restaurant	9 Parallel St	5758 3278	I2
Lakeside Falls Creek	14 Schuss St	0455 500 849	F2
Last Hoot Pizzeria & Bar	9 Slalom St	5758 3088	M3
The Man Hotel	20 Slalom St	5758 3362	I4
The Little Chop Italian Shop at Nelse	17 Slalom St	5758 3263	H3
Ory's Restaurant	4 Schuss St	5758 3899	J3
Powder Keg	Slalom Plaza	5732 8000	F4
Someplace Else	17 Slalom St	5758 3263	J3
Summit Ridge Restaurant	8 Schuss St	5758 3800	K3
<b>KIOSK &amp; ON-SLOPE DINING</b>			
Alpine Pepper Café	1 B.H.P. Rd	5758 3615	K6
Blue Brumby	Towers Chair Bottom		
Dicky Knees	Ruined Castle		
Jerry's Stall	9 Parallel St		I2
Snonuts Donuts & Snacks	Slalom Plaza	0417 572 228	F4
Slides	Slalom Plaza	0438 433 842	F5
The Spud Shack	Slalom Plaza	0417 572 228	F4
Windy Corner Cafe	Windy Corner	5758 3408	A3
<b>ACTIVITIES</b>			
Alpine Helicopters	Cloud 9	1300 189 686	
Cross Country Ski Lessons	Windy Corner	5758 3408	B3
Falls Creek Backcountry Tours		0488 021 883	
Falls Creek Guides		0412 250 873	
Falls Creek Museum	4 Slalom St	05 5758 1202	F4
Falls Creek Snowmobile Tours		0438 575 838	
Mountain Fitness Club	27 Falls Creek Rd		O2
Snowshoe Hire	Windy Corner	5758 3408	B3
Snowsports School	Cloud 9		
Toboggan Slope	Windy Corner		A3
<b>MASSAGE &amp; THERAPY</b>			
Altitude Physio & Massage	4 Schuss St	5758 3766	J3
Astro Day Spa	5 Sitzmark St	5758 3496	J4

BUSINESS/SERVICE NAME	ADDRESS	TELEPHONE	REF.
<b>FACILITIES &amp; SERVICES</b>			
ATM - Foodworks, The Man Hotel, Frying Pan Inn, Cloud 9			
Disabled Wintersports Australia	1 Slalom Street	1300 265 730	F4
Falls Creek Child Care	17 B.H.P. Rd	5758 1244	F4
Falls Creek Medical Centre	5 B.H.P. Rd	5758 1244	K6
Falls Creek Plumbing & Gasfitting		0409 002 940	
Falls Creek Race Club	1 B.H.P. Rd		K6
Foodworks Supermarket, Liquor & Newsagent	17 B.H.P. Rd	5758 3009	F4
Internet Access	St Falls Resort Day Shelter - Slalom Plaza		F4
Mountain Fitness Club	27 Falls Creek Rd		O2
Post Office	17 B.H.P. Rd	5758 3275	F4
Primary School	15 Slalom St	5758 3311	H3
Random Repairs and Maintenance		0407 342 668	
Traverse Alpine Group Office	Located at Frying Pan	5711 9105	
Zirkal Real Estate	17 B.H.P. Road	0402 277 808	
<b>COMMERCIAL ACCOMMODATION</b>			
Alpha Lodge	5 Parallel St	5758 3488	I2
Alpine View Apartments	29 Falls Creek Rd	5758 3461	N1
Alpine Woodsmoke	23 Bogong High Plains Rd	5758 3182	C4
Altezza 1570	9 Sitzmark St	0419 028 170	K3
Altitude Apartments	27 Falls Creek Rd	5758 3811	O1
Astra Falls Creek	5 Sitzmark St	5758 3496	J3
Attunga Lodge & Apartments	10 Arlberg St	5758 3295	G3
Cedarwood Apartments	11 Schuss St	5758 3393	L2
Cooroona Lodge	24 Slalom St	5758 3244	J4
Diana Alpine Lodge	6 Falls Creek Rd	5758 3214	K5
Elk at Falls	18 Slalom St	5758 3211	I3
Falls Creek Country Club	7 Bogong High Plains Rd	5758 3391	K6
Falls Creek Hotel	23 Falls Creek Rd	5758 3282	M2
Feathertop Alpine Lodge	14 Parallel St	5758 3232	G2
Fjall	7 Snowgum Lane	0433 650 784	C4
Frueauf Village	4 Schuss St	1300 300 709	J3
Geb's Apartments	3 Bogong High Plains Rd	1800 45 35 25	K6
Halley's Apartments	11 Slalom St	5758 3363	G3
Halley's Lodge	11 Slalom St	5758 3475	G3
Howman's Gap	2587 B.H.P. Rd	5758 3228	
Huski Apartments	3 Sitzmark St	1300 652 260	J4
Karella Alpine Lodge	9 Parallel St	5758 3278	I2
Killmanjar Flats	3 Arlberg St	5758 3242	H2
Koki Alpine Resort	1 Arlberg St	5758 3272	H3
Lakeside Falls Creek	14 Schuss St	0455 500 849	M2
Les Chalets	5 Slalom St	0488 041 145	E4
Murmel Lodge	16 Schuss St	5758 3346	M2
Pretty Valley Lodge	10 Slalom St	5758 3210	G4
Red Onion Ski Chalet	7 Arlberg St	0412 640 301	G4
Ripparoo Lodge	22 Slalom St	0476 300 372	I4
Ropers Apartments	10 Slalom St	5758 3210	G4
Schuss Lodge	10 Parallel St	5758 3372	H2
Silverski Rooms & Apartments	1 Sitzmark St	1800 181 770	J3
Snowlands Apartments	9 Slalom St	5758 3499	F3

BUSINESS/SERVICE NAME	ADDRESS	TELEPHONE	REF.
Snow Ski Apartments	1 Village Bowl Crt	5758 3356	N2
Snow Fall Lodge	1/15 Parallel St	0413 344 297	H2
St Falls Resort			
Summit Ridge Alpine Lodge	8 Schuss St	5758 3800	K3
Winterhaven Apartments	28 Slalom St	0419 360 996	J4
Woodsmoke Apartments	via Windy Corner	5758 3182	B4
CLUB LODGES & OTHER ACCOMMODATION			
Alana	4 Christie St		H4
Albury Ski Club	16 Sitzmark St	5758 3334	L4
Alpina	16 Slalom St		H4
Alyeska Flats	19 Falls Creek Rd		M2
Ascom Club	9 Arlberg St		G3
Aurora (CSIR) Ski Club	1 Schuss St	5758 3321	I2
Australian Alpine Club (AAC)	21 Falls Creek Rd	4706 0102	M2
Banool Lodge	12 Parallel St	5758 3553	H2
Bogong Ski Club	25 Falls Creek Rd	5758 3223	N2
Brucktal Apartments	17 Parallel St		H1
BSM Ski Club	19 Parallel St	5758 3351	G2
Camber Ski Club	2 Telemark St		H4
Carey Alpine Club	16 Parallel St	5758 3373	G2
Chinook	14 Sitzmark St		K4
Chorki Ski Club	3 Snowgum Lane	0439 001 531	D4
Cosela Alpine Club	5 Snowgum Lane	5758 3281	D4
Currawong Flats	16 Slalom St		H4
Edelweiss Flats	3 Christie St		I4
Four Seasons Chalet	1 Falls Creek Rd		I5
Geelong Ski Club	6 Parallel St		H2
Gello Flats	4 Telemark St		H4
High Plains Flats	7 Slalom St		E3
Horseshoe Creek	2 Falls Creek Rd	5758 1200	I6
Icicles Ski Club	8 Arlberg St	5758 3418	G3
Imaj Flats	17 Falls Creek Rd		M3
Karingal Home Units	4 Parallel St		I2
Kathmandu Flats	16 Falls Creek Rd		M3
Kiewo Valley Ski Club	5 Falls Creek Rd	5758 3417	J5
Konayuki	16 Slalom St		I3
Koomerang Ski Club	17 Falls creek Rd		M3
Kunama Flats	12 Falls Creek Rd		L4
Langrenn Ski Club	17 Falls Creek Rd		M3
Lilimbu Flats	1 Parallel St		J2
Maisonettes	14 Falls Creek Rd	5758 3124	L4
Mini Flats	11 Parallel St		H2
Mogul Ski Club	10 Schuss St	5758 3551	K3
Myrtleford Ski Club	10 Falls Creek Rd	5758 3283	K4
Naarilla Flats	3 Parallel St		J3
Nissen	32 Falls Creek Rd		P2
Oldina Ski Club	5 Arlberg St		H2
Pontressina Flats	12 Schuss St		L2
Powerhouse Flats	2 Village Bowl Crt		O2
Rainbow Lodge	7 Parallel St		I2
Riverina Alpine Club	25 Slalom St	5715 9132	J4
Rocky Valley	3 Slalom St		E4
Sapporo Flats	17 Falls Creek Rd		M3
Sassalis	17 Falls Creek Rd		M3
Sastrugi	14 Sitzmark St		K4

BUSINESS/SERVICE NAME	ADDRESS	TELEPHONE	REF.
Schusski Flats	3 Schuss St		K2
Southern Cross Flats	1 Christie St		I5
Spion Kopje Flats	13 Sitzmark St		L3
St Trinians Flats	3 Falls Creek Rd		J5
Sun Valley Flats	5 Schuss St		K2
Tivoli Ski Club	2 Parallel St	5758 3235	I3
University Ski Club	8 Parallel St		H2
Viking Alpine Lodge	13 Parallel St	5758 3247	H2
Wagga Alpine Ski Club	11 Sitzmark St		K3
Wat Thai Ski Club	23 Slalom St		J4
EQUIPMENT RENTAL, BOOT FITTING AND RETAIL SHOPS			
Central Snowsports Outlets			
Cedarwood	11 Schuss St	5758 3500	L2
Central Snowsports Boot Fitters	28 Slalom St	5758 3500	J5
Silverski	1 Sitzmark St	5758 3500	I4
Winterhaven	28 Slalom St	5758 3500	K5
Falls Creek Ski Lifts Outlets			
Falls Creek Sports	Village Bowl		N2
Falls Creek Sports	Slalom Plaza		F3
Falls Creek Sports	Cloud 9		
Ski & Boot Co	Village Bowl		N2
The Board Lounge	17 B.H.P Rd		F4
Falls Creek Cross Country	25 Bogong High Plains Rd	5758 3408	B3
Halley's Ski Hire	11 Slalom St	5758 3363	G3
I Dream of Snow	St Falls Resort West Building	0412185463	F4
Rapunzel's Gallery	17 BHP Rd	0419 317 013	F4
Sando's Snow Monkey	9 Slalom St	0457 311 349	F3
SKIMETRIC Function Integration Workshop	Astra Falls Creek	0408 223 333	J4
Snowrider Rentals	23 Falls Creek Rd	5758 3819	N2
Yogi's Ski & Snowboard Hire	8 Falls Creek Rd	5758 3377	K4
RESERVATION CENTRES			
Alpine Apartments		5758 3499	
Snow Hippie		0419 028 170	
Falls Creek Accom		0419 317 013	
Falls Creek Central Reservations		1800 033 079	
TRANSPORT SERVICES			
4SITE Australia		0427 411 415	F5
Accommodation Transfer Service	15 B.H.P Rd	5758 1203	H5
Alpine Helicopters		1300 189 686	
Easystans Private Transfers	Albury	02 6021 3777	
Falls Creek Coach Service	Tawonga South	5754 4024	
FallsBus	Wangaratta	1300 781 221	
MT Beauty Transfers		0488 863 360	
Remos Transport	Albury	0417 414 320	
Snowlimo Private Transfers	Albury	1300 244 546	
RESORT INFORMATION			
Falls Creek Visitor Information Centre	1 Slalom St	5758 1200	E4
Falls Creek Alpine Resort (management)	1 Slalom St	5758 1200	E4
Falls Creek Chamber of Commerce		5758 3733	
Falls Creek Ski Lifts	3 Village Bowl Crt		O3
FOR EMERGENCY CALLS & AMBULANCE PHONE 000			
ENQUIRIES ONLY			
Falls Creek Medical Centre	5 Bogong High Plains Rd	5758 3238	K6
CFA	1 Slalom St	5758 3642	E4
Police Station	1 Slalom St	5758 3424	E4
Ski Patrol		5758 3502	



**Key**

-  Ski Areas
-  Shuttle Bus Route
-  Trees
-  Village Bus Route
-  Ski Lift
-  Walking Trails
-  Stairs
-  Aqueduct
-  Shuttle Stop
-  Toilets
-  Village Bus Stop
-  ATS (Accommodation Transfer Service)
-  Information Centre
-  POL Police
-  Defibrillator Location
-  Public Shelter
-  SES SES
-  P Parking
-  CFA CFA
-  Medical Centre / Ambulance



**Village Bus Stop**



**Village Shuttle Stop**



# BRIGHT BREWERY

MOUNTAINCRAFTED



A BEER TO HELP CHANGE THE WORLD!

**POW**   
PROTECT OUR WINTERS



Welcome to  
**Subaru**  
AWD country

